

# Design Information

## Available Configurations:

<b>Panel:</b>	<b>Operation:</b>	<b>Use:</b>
Single	Left/Right	Inside/Outside
Double	X	X

## Application

Series 1600-D Swinging Doors are typically used in cabin side and aft bulkhead locations as salon entry and are appropriate for motoryachts, sport cruisers, and houseboats.

## Fabrication

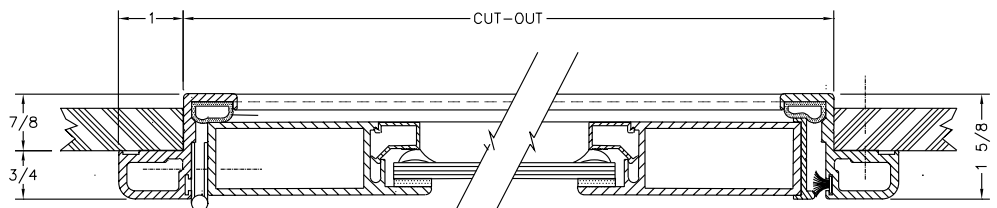
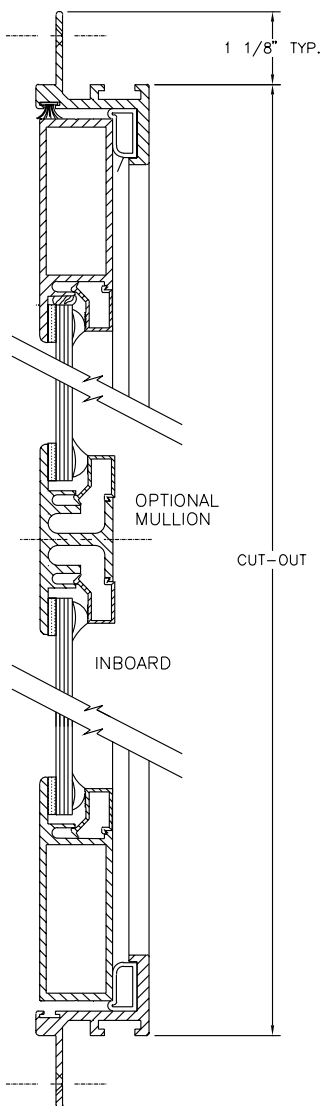
Master frame of aluminum extrusions are fully welded assuring a weather tight jamb. The door units are welded and glazed using 1/4" tempered glass or custom panels.

## Hardware

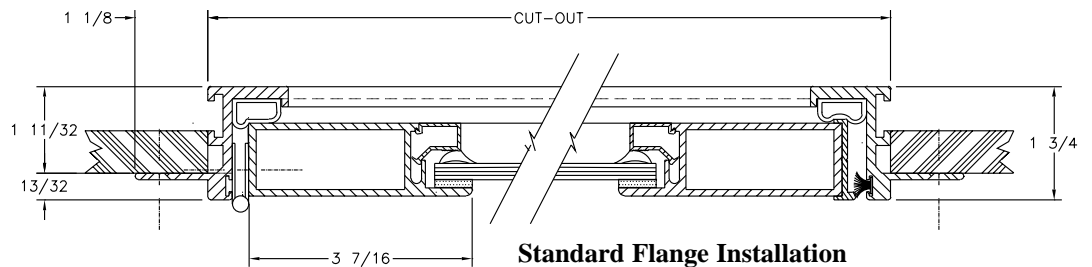
Marine quality locksets, day-latches, hinges, and security systems are available upon request.

## Finish

Marine grade urethanes and polyester powder coatings in various standard and custom colors are available.



**Bulkhead Frame Installation**



**Standard Flange Installation**